

Electromagnetic Locks

8330 

8 Series Extended Housings

8340 



In or Out...we make it Easy!®

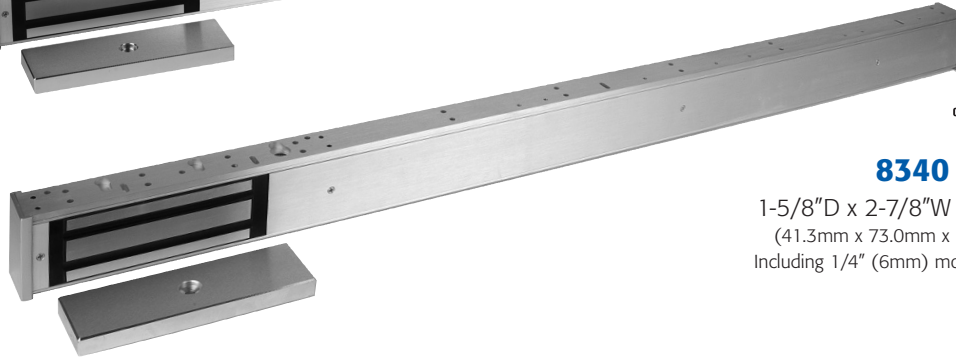


Larger LED for Better Visibility (SCS versions only)



8330

1-5/8"D x 2-7/8"W x 34-1/2"L
(41.3mm x 73.0mm x 876.3mm)
Including 1/4" (6mm) mounting bracket



8340

1-5/8"D x 2-7/8"W x 46-1/2"L
(41.3mm x 73.0mm x 1181.1mm)
Including 1/4" (6mm) mounting bracket

Features & Benefits

- Larger LED for better visibility (SCS versions only)
- Length modifications on-site using special endcaps after cutting (minimum length 24")
- Field selectable – 12/24VDC
- MOV surge protection
- Built-in time delay (instant release with adjustable relock, programmable from 0-110 seconds)
- No residual magnetism
- Hardened steel armature nut
- Easy-access wiring cavity
- Low energy consumption
- Self-drilling tek™ fasteners
- Brushed Anodized Aluminum or Brushed Anodized Dark Bronze finish

MultiMag® with Extended Housing

Attractively designed to enhance the look of the electromagnetic lock installation, the 8330 and 8340 provide a finished look as well as solid security for the end user.

A unique feature of these models is that their length can be modified on-site, using special endcaps (included).

To achieve two-point locking for higher security applications, two 8330's or 8340's are mounted vertically.

For pairs of doors, one right-handed and one left-handed model can be mounted horizontally.

Highlights

- Handed – specify right hand (RH) or left hand (LH)
- On-site length modifications
- Up to 1500 lbs. holding force
- Dual voltage
- cULus Listed
- Low voltage detection (SCS version)
- Lifetime Warranty

Applications

INTERIOR OR PERIMETER

- Single outswinging doors
- Single inswinging doors (use with Z bracket)
- Pairs of outswinging doors without mullion
- Pairs of inswinging doors without mullion (use with Z brackets)

Optional Mounting Accessories

- Angle Brackets (available upon request)
- Armature Plate Holders
- Glass Door Brackets
- Spacers (available upon request)
- DSS Retrofit Kits
- Armature Bolts for thicker doors

Options

DSS..... Door Sensor Status
SCS..... Security Condition Sensor (includes LED)
DSS/SCS..... Combination

Specifications

8330 

8340 



In or Out...we make it Easy!®

NOTE: Specifications are subject to change without notice.

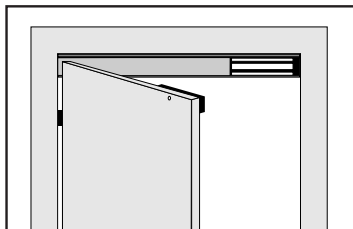
Specifications	8330	8340
Housing Dimensions	1-5/8"D x 2-7/8"W x 34-1/2"L (41.3mm x 73.0mm x 876.3mm) (including 1/4" mounting bracket)	1-5/8"D x 2-7/8"W x 46-1/2"L (41.3mm x 73.0mm x 1181.1mm) (including 1/4" mounting bracket)
Armature Plate Dimensions	Standard 5/8" D x 2-3/8" W x 7-7/16" L* (15.9 x 60.3 x 188.9mm) Optional 3/8" D x 2-3/8" W x 7-7/16" L* (9.5 x 60.3 x 188.9mm)	Standard 5/8" D x 2-3/8" W x 7-7/16" L* (15.9 x 60.3 x 188.9mm) Optional 3/8" D x 2-3/8" W x 7-7/16" L* (9.5 x 60.3 x 188.9mm)
Voltage	Field selectable 12/24 VDC Tolerance ±10%	Field selectable 12/24 VDC Tolerance ±10%
Power/Current Requirements	Max 0.28A at 12 VDC Max 0.28A at 24 VDC	Max 0.28A at 12 VDC Max 0.28A at 24 VDC
Holding Force	One-point locking (up to 1500 pounds)	One-point locking (up to 1500 pounds)
Output Relays	SCS – SPDT 1.25 @ 24VDC DSS – SPDT 0.20A @ 12VDC and 0.12A @ 24VDC	SCS – SPDT 1.25 @ 24VDC DSS – SPDT 0.20A @ 12VDC and 0.12A @ 24VDC
Wiring Requirements	2 wires – power input Up to 4 wires output	2 wires – power input Up to 4 wires output
Operating Temperature	14 to 140° F (-10 to 60° C)	14 to 140° F (-10 to 60° C)
Certification	cULus Listed, MEA, CSFM	cULus Listed, MEA, CSFM

*DSS armature plate dimensions are 5/8" D x 2-3/8" W x 10" L (15.9 x 60.3 x 254.0mm) and 3/8" D x 2-3/8" W x 10" L (9.5 x 60.3 x 254.0mm).
NOTE: RCI recommends frame reinforcement and our filtered, regulated DC voltage 10 Series power supplies.

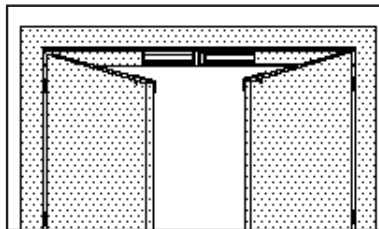
Function Descriptions

Security Condition Sensor (SCS)	Electronic field presence sensor for remote and local LED indication of lock status (locked or unlocked), reduced holding force caused by materials between magnet and plate, and unlocked device due to current loss.
Door Status Sensor (DSS)	Ceramic magnet for remote indication of door status (opened or closed, independent of local power) and is embedded in armature for tamper resistance. Reed switch is located inside electronic housing cavity for easy access.
Low Voltage Detection	Low voltage dramatically reduces electromagnetic lock holding force. This detection feature signals the SCS relay/LED to activate (alarm) when voltage drops below 10.3 VDC (12V input) or 20.5 VDC (24V input).

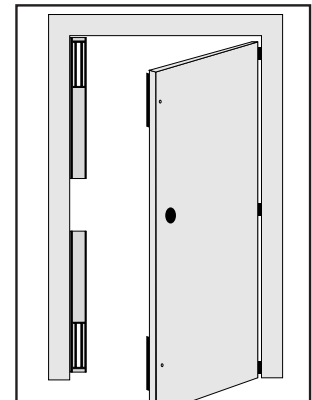
8330/8340 High-Security Installation



8330/8340 Installation
Single Door



8330/8340 Installation
Pairs of Doors



RCI also offers a complete line of Electromagnetic Locks, Electric Strikes, Power Supplies, Switches, Key pads & Readers, Exit Devices, Systems & Door Hardware.